



**ERRES**



**RADIO**



**ERRES**



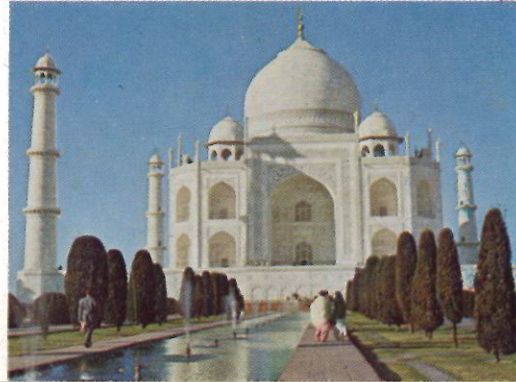
**RADIO**



**1961**

**1962**

**ERRES**



**RADIO**



all  
transistor

ERRES

portable  
radios



## Carry your happiness with you!

ERRES designers have succeeded to develop a portable radio which not only has excellent acoustical properties but is also presented in a small and handy cabinet.

Thanks particularly to these features this ERRES portable offers full, strong and undistorted sound reproduction.

The sporty looks and yet solid construction of these portables make them the ideal set to use on camping and hiking trips, in the woods, on the beach or in the mountains.

This portable also comes in handy as a second radio in your home and this ERRES portable is the ideal set for your kitchen, bedroom, sitting room or study. The large size speaker is your guarantee for perfect sound reproduction.

The frame type aerial guarantees you perfect and crystal clear reception of all weak stations on the SW band.

Summing up, these portable ERRES radios open up a wide field of new possibilities each of which will add to your listening pleasure.



### The clock type dial

The illustration shows the widely praised clock type dial, a feature that has once again been incorporated in a number of ERRES sets.

This clock type dial with its special precision tuner enables you to tune in to any station of your choice on the various wavebands. Very soon you will find that this system cannot be beaten for convenience and practical use.



**2-band  
all-transistor  
portable  
(7 transistors)**

Transistors and diodes:  
7 + 2

Cabinet:  
Skinplate housing with white polystyrol lid and bottom dimensions:  
10½" x 5¾" x 3⅛"

Waveranges:  
MW 187—555 m  
SW 19— 64 m

Technical data:  
loudspeaker 4" x 4" —  
2 push-buttons for wave-  
band selection — ferrite  
aerial 6¾" — outside frame  
aerial — power  
supply by 4 flashlight cells  
1,5 V — output 350 mW —  
tropicalised.

**RA 620.1 P**  
**ERRES**  
**RA 601.1 P**

**3-band  
all-transistor  
portable  
(7 transistors)**



Transistors and diodes:  
7 + 2

Cabinet:  
Leatherette rear cover with plastic front

Dimensions:  
11½" x 7½" x 4"

Waveranges:  
MW 185—585 m  
SW 2 35— 84 m  
SW 1 13— 36 m

Technical data:  
Oval electrodynamical loud-  
speaker of 6" x 4" —  
4 push-buttons for on/off and  
waveband selection — ferrite  
aerial (8") — connections  
for outside aerials (f.i. for  
use in a motorcar) —  
convertible frame aerial on  
the outside of the set —  
power supply by 6 dry  
batteries 1½ Volts (flash-  
lightcells) — output 600 mW  
— fully tropicalised.

Also available in the  
execution: RA 601.2 P  
SW 2 19— 58 m  
SW 1 58—170 m  
MW 180—585 m



## CORDLESS

### 3-band all transistor receiver (7 transistors)



The mere fact that this small size set of highly balanced design is presented in an attractive walnut cabinet is your guarantee for top performance in this category.

Sound reproduction — the set has a large size speaker — is perfect.

The grip fits in the rear panel of the set which makes for easy handling. A large dial with precision tuner ensures razor sharp tuning on the MW band as well as on the two SW bands.

In addition, this set is provided with a connection for a record player while the highspeed charger enables you to replace batteries in a jiffy.

### 4-band all transistor receiver (7 tra



Transistors and diodes:

7 + 2

Cabinet:

highgloss polished wooden cabinet with plastic front; dimensions 14" x 8" x 5"

Waveranges:

MW 182 —580 m

SW 2 40 —130 m

SW 1 13,3— 41 m

Technical data:

Elliptical quality loudspeaker 6" x 4" — built-in ferrite aerial and collapsible outside frame aerial — connections for outside aerial, earth and gramophone — power supply by 5 flashlight cells 1,5 V — printed circuit — output 600 mW — tropicalised.

RA 622.1 AT

**ERRES**

RA 623.1 AT

Transistors and diodes:

7 + 2

Cabinet:

attractive plastic cabinet dimensions 16" x 9" x 6"

Waveranges:

MW 185—575 m

SW 2 37—107 m

SW 1 13— 38,5 m

Technical data:

Elliptical quality loudspeaker 6" x 4" — 5 push-buttons for on/off, tone and 3 wave-ranges — built-in ferrite and capacitive aeri-als — connections for outside aerial and gramophone — power supply by 6 flashlight cells 1½ V in sealed compartment — output 600 mW — printed

## CORDLESS

### 3-band all transistor receiver (7 transistors)



This set is basically similar to model RA 622.1 AT but of more generous dimensions; a larger cabinet, made of plastic in a modern subdued colour, push-buttons, briefly, a set with an air of distinction.

Again there is a moulded-in handle in the rear panel for easy carrying and then there is yet another feature: the

Here it is: the slim lined receiver in the lower price these days.

It may be inexpensive but it has flywheel tuning feature — its ample dimensions suggest that this. Other features are: grip in rear panel, continuous only if volume button is depressed to save battery tensionmeter/tuning indicator. Finally there is superb sound reproduction.



## 4-band all transistor receiver (7 transistors)



Transistors and diodes:  
7 + 2

Cabinet:  
of black bakelite with beige  
front;  
dimensions: 24" x 9" x 8"

Waveranges:  
MW 185—585 m  
SW 3 44—136 m  
SW 2 22—44,5 m  
SW 1 11—22 m

## CORDLESS ERRES RA 624.1 AT

Technical data:  
Oval electro-dynamical loud-  
speaker — 6 push-buttons  
for on/off, gramophone and  
waveband selection — tuning  
indicator — built-in ferrite  
and frame aerial — connec-  
tions for outside aerial, earth  
gramophone and extra loud-  
speaker — power supply by  
6 x 1½ Volt flashlightcells  
in sealed compartment —  
output 1000 mW — printed  
circuit — tropicalised.

Here it is: the slim lined receiver in the lower price category which is so much in demand these days.

It may be inexpensive but it has flywheel tuning just the same and — another important feature — its ample dimensions suggest that this set is in a much higher price category. Other features are: grip in rear panel, continuous tone control, dial illumination ('on' only if volume button is depressed to save battery) and the 'radicator', a combined battery tensionmeter/tuning indicator. Finally there is the oval concert speaker offering superb sound reproduction.



Transistors and diodes:

7 + 2

Cabinet:

high gloss polished walnut cabinet;

dimensions:

20½" x 12½" x 8"

Waveranges:

MW	185—585	m
SW 1	44—136	m
SW 2	22— 44,5	m
SW 3	11— 22	m

## CORDLESS ERRES RA 625.1 AT

Technical data:

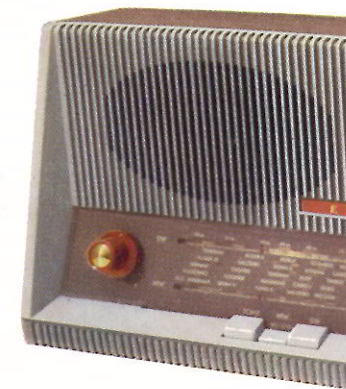
Oval electro-dynamical concert loudspeaker 8" x 6"  
— 6 push-buttons for on/off, gramophone and waveband selection — 5 push-buttons for news-cast, concert, dial, local and battery — tuning / battery-tensionmeter — built-in ferrite and capacitive aerials — connections for outside aerial, earth, gramophone and extra speaker — power supply by 6 x 1,5 Volt flashlight cells in separate compartments — output 1000 mW — tropicalised.

### 4-band all transistor receiver (7 transistors)



This is the super set of the ERRES all transistor series. It has 7 transistors and two diodes, a very ample output and unmatched sound reproduction due to the splendid wooden cabinet and carefully balanced tonal qualities.

The push-buttons to select from 4 wave bands and record player, the 5 extra push-buttons to select sound quality, a 'radicator' and a dial illumination that may be switched off make this set a real asset — for you and the entire family.



### 2-band mains receiver with 4 tu

This ERRES receiver has that modern, clean line that has distinction and its fine colour accents and sleek form will harmonize perfectly with the up-to-date decor. The interior harmonizes perfectly with the up-to-date decor. The right type of tone control ensures a sound reproduction. To select the wave bands, just push the corresponding push-button. To ensure faultless SW reception, this set has been provided with a highly sensitive reception required for the

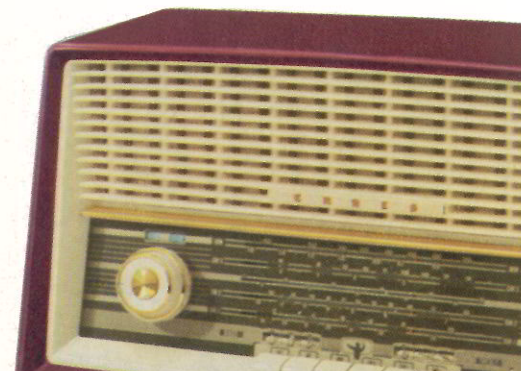
### 4-band mains receiver with 6 tu

This set embodies the very latest technical, esthetical and functional into a harmonious whole.

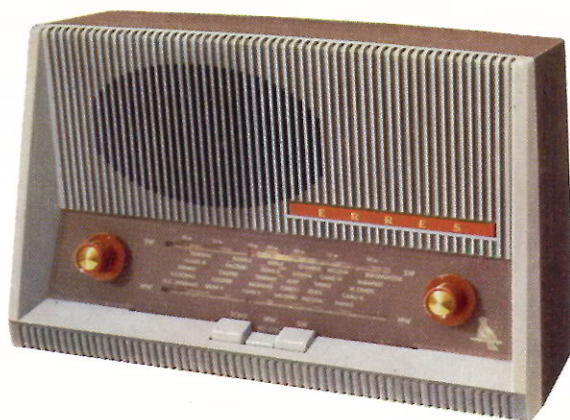
The cabinet has a flow of lines that is easy on the eyes in any setting. In addition, it has been adapted to meet the needs of the modern age.

The elliptically shaped concert speaker and the 3-D acoustical system give listening pleasure.

The built-in frame and ferrite rod aerials are highly sensitive.







## 2-band mains receiver with 4 tubes

This ERRES receiver has that modern, clean line that has become so popular wherever you go. It is a set with distinction and its fine colour accents and sleek form will satisfy the needs of all customers.

The interior harmonizes perfectly with the up-to-date design, an amply dimensioned oval speaker combined with the right type of tone control ensures a sound reproduction that will suit your personal tastes and preferences.

To select the wave bands, just push the corresponding button.

To ensure faultless SW reception, this set has been provided with a built-in frame aerial whilst a ferrite rod aerial gives you the highly sensitive reception required for the MW range.

**Tubes:**  
4 with 9 functions

**Cabinet:**  
of polystyrol material;  
dimensions 12½" x 8¼"

**Waveranges:**  
MW 185—575 m  
SW 25—94 m

**Technical data:**  
Oval quality loudspeaker  
6" x 4" — 3 push-button  
waveband- and tone sel  
— large built-in ferrite  
— built-in capacitive a  
for fine reception on S  
connection for outside  
— tone adjustment by  
means of a push-button  
printed circuit —  
suitable for connection t  
220-240 volts AC/DC —  
output 1300 mW —  
fully tropicalised.  
This model is also avail  
in the battery-version  
KY 592.1.B, which is su  
for connection to a  
90V—1½V battery.

**KY 592.1**  
**ERRE**  
**KY 594.1**

## 4-band mains receiver with 6 tubes

This set embodies the very latest technical, esthetical and functional features which have been happily blended into a harmonious whole.

The cabinet has a flow of lines that is easy on the eyes without, however, being too 'far out' and is an asset in any setting. In addition, it has been adapted to meet the specific demands of the technical progress of this day and age.

The elliptically shaped concert speaker and the 3-D acoustical channels on the sides guarantee you unmatched listening pleasure.

The built-in frame and ferrite rod aeriels are highly sensitive and ensure perfect reception.

**Tubes:**  
6 with 10 functions

**Cabinet:**  
attractive polystyrol cab

**dimensions:**  
18" x 10" x 8¼"

**Waveranges:**  
MW 185—575 m  
SW 3 44—136 m  
SW 2 22—44,5 m  
SW 1 11—22 m

**Technical data:**  
Elliptical quality  
loudspeaker and 3-D  
acoustical channels at t  
sides — 6 push-buttons  
waveband selection and  
gramophone — tone c  
with indicator — tuning  
indicator — built-in capi  
and ferrite aeriels —  
connections for outside  
gramophone, extra loud  
ker — suitable for ope  
on 90/240 volts A.C. .  
output 2500 mW —  
printed circuit — tropic



This model is also available in the battery-version KY 594.3 B, which is suitable for connection to a 90 V-1½ V battery.

**Waveranges:**  
LW 730 - 2040 m  
MW 185 - 575 m  
SW 1 13 - 44 m  
SW 2 44 - 137 m



Tubes:  
4 with 8 functions

Cabinet:  
attractive cabinet;  
dimensions: 15" x 9" x 6"

Waveranges:  
SW 1 13—40 m  
SW 2 40—140 m  
MW 185—570 m

Technical data:  
Elliptical loudspeaker 6" x 4"  
— 5 push-buttons for wave-  
band selection, tone and  
gramophone — built-in  
capacitive and ferrite aerials  
— connections for outside  
aerial and gramophone —  
suitable for operation on  
90-250 volts A.C. — output  
1500 mW — printed circuit  
— tropicalised.

This model is also available  
in the cordless all transistor  
version type KY 603.2 AT.

Waveranges:  
LW 730—2000 m  
MW 185—575 m  
SW 24—87 m

### 3-band mains receiver with 4 tubes



An excellent ERRES design of outstanding technical qualities. The set is provided with a relatively large size speaker ensuring and undistorted sound reproduction.

Furthermore, there are five push-buttons to select wavebands, record player and sound quality.

Again the built-in frame and ferrite rod aerials ensure a high sensitivity.



### 4-band mains receiver with 6 tu

A medium class mains receiver with the allure of a top asymmetrically placed dial and controls — makes it sta Simply depress a push-button for the wave-range of yo perfect sound reproduction.

**KY 603.1**  
**ERRES**  
**RA 623.1**

Tubes:  
5 with 8 functions

Cabinet:  
attractive polystyrol cabinet;  
dimensions: 16" x 9" x 6"

Waveranges:  
MW 185—575 m  
SW 2 40—140 m  
SW 1 13—40 m

Technical data:  
Elliptical quality loudspeaker  
— 5 push-buttons for on/off,  
tone and waveband selection  
— bandspread — built-in  
capacitive and ferrite aerials  
— connections for outside  
aerial and gramophone —  
suitable for operation on  
90 / 240 Volts A.C. — output  
2300 mW — printed circuit —  
tropicalised.

### 3-band mains receiver with 5 tubes



In the same range there is a set for those who prefer a modern and smooth design: the ERRES RA 623.1.

With its ample cabinet of quiet colours and big tuning dial this set is a first-class receiver for the buyer of modest means

### 4-band mains receiver with 6 tubes



This "ERRES" receiver is a most harmonious combination





### 4-band mains receiver with 6 tubes

A medium class mains receiver with the allure of a top class radio. The popular slim lined shape — with the asymmetrically placed dial and controls — makes it stand out in any interior.

Simply depress a push-button for the wave-range of your choice. The large-size oval concert speaker ensures perfect sound reproduction.

**Tubes:**  
6 with 10 functions

**Cabinet:**  
attractive bakelite cabinet  
dimensions: 23½" x 9"

**Waveranges:**  
MW 185—575 m  
SW 3 44—136 m  
SW 2 22— 44,5 m  
SW 1 11— 22 m

**Technical data:**  
Elliptical quality loudspeaker  
6" x 4" — 5 push-button  
on/off, gramophone and  
waveband selection — tuning  
indicator — built-in  
capacitive and ferrite aerial  
— connections for outside  
aerial, earth, gramophone  
extra loudspeaker and  
recorder — suitable for  
operation on 90/240 Volt  
A.C. — output 3,2 Watt —  
tropicalised.

RA 624.1  
**ERRE**  
RA 6151

### 4-band mains receiver with 6 tubes



**Tubes:**  
6 with 10 functions

**Cabinet:**  
highgloss polished walnut  
dimensions:  
20½" x 12¼" x 8"

**Waveranges:**  
MW 185—575 m  
SW 3 44—136 m  
SW 2 22— 44,5 m  
SW 1 11— 22 m

**Technical data:**  
Elliptical quality loudspeaker  
8" x 6" — 6 push-buttons  
on/off, gramophone, MW,  
SW 3, SW 2, SW 1 — 5 push-  
buttons for jazz, speech,  
concert, mild and mellow  
tuning indicator — built-in  
capacitive and ferrite aerial  
— connections for outside  
aerials, earth, gramophone  
extra loudspeaker and  
recorder — suitable for  
operation on 90/240 Volt  
A.C. — output 3,4 Watt —  
tropicalised.

This "ERRES" receiver is a most harmonious combination of the latest concepts of esthetical and functional design. The beautiful wooden cabinet is an asset to any home and fully adapted to meet the specific requirements of modern radio engineering. It has a powerful undistorted sound reproduction and therefore it will be a source of ever returning listening pleasure for its owner.



### 5-band mains receiver with 7 tubes

A radio especially made for the exigent listener, but sold at a price which also enables many customers, including those of not too ample means, to enjoy the full richness of sound of this top quality set.

This radio, suited for the reception on 5 wave bands, has 3 built-in and 2 extension speakers, thus ensuring perfect reproduction of treble and bass which can be blended to anyone's personal liking by separate controls.

The performance of the already extremely sensitive "ERRES" radios is still stepped up in this set by an extra radiofrequency stage.

The splendid highgloss walnut cabinet will fully convince you that this is really a prize possession.



### 5-band mains receiver with 8 tubes

**ERRES**  
KY 596.1

#### Technical data:

1 oval-shaped 8" x 6" concert speaker and 2 electrostatic speakers for high tone reproduction — 7 push-buttons for waveband selection and record player — 3 push-buttons for tone selection (the proper adaption of timbre to living room and broadcast) — magic tuning indicator — extra RF amplifier stage for greater sensitivity — adjustable ferrite rod aerial for better MW reception — built-in capacitive aerial for SW reception (can be switched off) — connections for outside aerial, record player, Hi-Fi speaker, extension speaker and tape recorder — suitable for connection to 90-110-125-200-220 and 250 volts A/C — output 3,2 W — tropicalised.



**ERRES** RA 628.1

The very height of technical skill!

All the latest technical and scientific features suitable for full as well as for semi-stereo. This semi-stereo system is a cleverly thought-out system of working speakers so that by merely deactivating one of them you obtain real stereo.

In addition, this receiver has connections for full stereo reproduction.

And finally there is the handsomely finished cabinet of any home.

**Tubes: 8 with 14 functions**

**Cabinet: highgloss polished walnut**

**Dimensions: 29" x 11" x 9 1/4"**

**Waveranges:**

**MW 186—573 m SW 4 44—135 m**





5-band mains receiver with 8 tubes

**STEREO**

## **ERRES** RA 628.1

The very height of technical skill!

All the latest technical and scientific features known to radio have been combined in this set which is suitable for full as well as for semi-stereo reproduction.

This semi-stereo system is a cleverly thought out arrangement of, among other things, two separately working speakers so that by merely depressing a button the same sound effect is obtained as with real stereo.

In addition, this receiver has connections for record player and tape recorder for mono as well as for full stereo reproduction.

And finally there is the handsomely finished highgloss walnut cabinet that will enhance the interior of any home.

**Tubes: 8 with 14 functions**

**Cabinet: highgloss polished walnut**

**Dimensions: 29" x 11" x 9 $\frac{1}{4}$ "**

**Waveranges:**

**MW 186—573 m    SW 4 44—135 m    SW 3 27—45 m    SW 2 17,3—28 m    SW 1 11—17,6 m**

**Technical data: 2 elliptical quality concert-loudspeakers 8" x 6" — push-pull output stage — 6 push-buttons for semi-stereo, conductor tone control, stereo, concert, solo and jazz — tuning indicator — built-in capacitive and ferrite aeriels — tone control with indicator — connections for outside aerial and earth, gramophone and bandrecorder both for mono and stereo, connections for additional stereo speakers — suitable for operation on 90/240 Volt A.C. — output 3,5 W. — tropicalised.**





Anybody who owns not only an ERRES radio  
but an ERRES TV receiver as well,  
will at all times be assured of the very best  
in the field of sound and viewing techniques.

The ERRES TV sets  
are on the same high level of quality  
as the ERRES radios.

Your dealer:

